

NEWSLETTER

SPRING 2010

Issue 1

POINTS OF SPECIAL INTEREST :

- > Welcome
- > Fixtures for the Diary
- > English Show Championship
- > Membership Application
- > Who's Who
- > Local Contacts

INSIDE THIS ISSUE:

Three Counties	2
Facts	2
Web	2
Your Say	3
Membership	3
Committee	4
Area Reps	4

Introduction

*W*elcome to our first newsletter which we aim to produce quarterly in an effort to rejuvenate the 'Support group' and encourage more active membership.

Some of you will be aware that we are in the process of conducting a survey which aims to understand more about what you would like from the group which exists to represent the interests of English

Llanwenog breeders.

This year there will be no Spring visit, instead, we are combining our annual AGM with a flock visit to The Museum of Welsh Life at Sain Ffagan in Cardiff and we hope to expand our programme of activities over time.

It goes without saying that the more members we have the more services we can provide for you, the breeders, to assist with the promotion of the breed itself. You will find a membership form

enclosed, which we hope you will return.

We look forward to hearing from you and seeing you over the course of the year.

*Brian Williams
Chairman*



St Fagans Castle is a Grade 1 listed building and one of the finest Elizabethan manor houses in Wales

FIXTURES FOR YOUR DIARY

Sat 3rd July, AGM & Flock Visit to The Museum of Welsh Life Sain Ffagan, Cardiff.

Details will be provided in the next Newsletter.

Official Breed Society Show & Sale dates:

Sat 28th August 2010, Llanybydder

Sat 4th September, Worcester

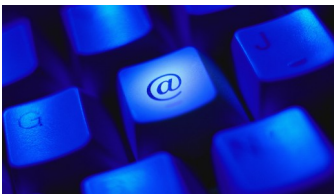
There is a Llanwenog Section at Melton Mowbray on **Saturday 11th Sept.**

Look out for your local rare breed sales at Carlisle, Chelford, Newark, Shrewsbury, Sedgemoor & York.



Show Schedule now on line. See Page 71 for the classes at: www.threecounties.co.uk/threecounties

To advertise Stock for Sale or Sponsor the Newsletter please contact Charles Horton



www.llanwenog-sheep.co.uk

English Show Championship

The Three Counties Show at Malvern on **Sun 20th June** will be running Llanwenog classes.

This is the only show in England which has Llanwenog classes and this will be the **English Championship** for

the breed.

There will be trophies awarded for the highest placed sheep exhibited by support group members.

All members of the support group are eligible as long as subscriptions have been paid by 1st June 2010.

Schedules are available from the Malvern Show-ground Tel: 01684 584900. The closing date for entries is 13th April 2010.

This year there are also breed classes at the Monmouth show on **Thurs 26th August**.

Facts & Figures

We are keen to encourage more of you to send in your flock book returns.

This information is vital for the Society to determine the number of breeding ewes for the breed, the whereabouts of rams and statistical background for the Rare Breeds Survival Trust monitor.

Please remember to send back your flock book returns to Meirir Green, the Society Secretary when prompted each autumn.

IMPROVED WEB PRESENCE

We are currently looking into setting up a link or new pages on the Llanwenog Sheep Society website on which we wish to post items such as ram exchange, stock for sale, show results, details of butchers looking

for Llanwenog lambs, local meetings and get togethers.

If any of you are budding web designers we would like to hear from you.

HAVE YOUR SAY...

If you have any matters you would like to bring to the attention of the Breed Society working committee please contact Brian Williams or Charles Horton.

We are conducting a survey amongst English Breeders in order to find out what sort of events etc you would like the support group to organize.

Your ideas for events, projects you would like us to focus on and general feedback are very welcome.

A resume of the results will appear in a future edition of this newsletter.

Please let us know if you would like us to remove your name from this mailing list.



Brian
01530 413050

Charles
01285 850905

Membership Application

Name

Flock Prefix/No.....

Address.....

.....

.....

.....Post Code.....

Tel.....

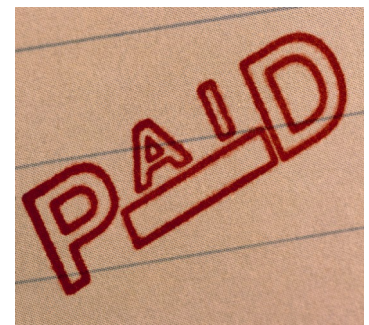
Email.....

Don't forget to tear off and post in good time if you are entering the Three Counties Show ...

Annual Subscription

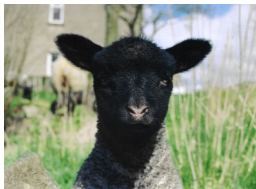
Annual Fee: £5. Please find enclosed my cheque, payable to the Llanwenog Sheep Breeders Support Group

Subscription for 2010/11 must be paid by the AGM (3rd July 2010). Please return to Charles Horton at address overleaf.



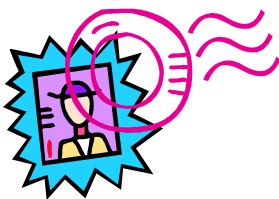
**LLANWENOG
SHEEP BREEDERS
SUPPORT GROUP**

Poulton Fields
Poulton
Cirencester
Gloucestershire GL7 5SS
Phone: 01285 850905
mobile: 07831 489694
E-mail:
nellfarm@btconnect.com



The Editor

www.llanwenog-sheep.co.uk



Who's who on the support group committee

Brian Williams (*Red Burrow*) Chairman
Charles Horton (*Nell*) Secretary
Peter Richards (*Canalside*) Treasurer
Peter Hicks (*Coton*)
Philip Hodges (*Charndon*)
Barbara McLachlan (*Hillesden*)
Maggie Wilson (*Pessall*)

Local Contacts

The Llanwenog Sheep Society has appointed Area Representatives who are available for advice and guidance should you need it.

David Henson
(*Bradden*) Berkshire
Oxfordshire, Bucks,
Northamptonshire,
Warwickshire.

Maggie Wilson (*Pessall*)
Derbyshire, Rutland,
Leicestershire, Norfolk,
Suffolk, Lincolnshire.

Margaret Brain
(*Whiteparish*) Wiltshire,
Hampshire, Surrey

Lawrence Jones
(*Blackhall*) Dorset,
Devon, Somerset

Jane Wilson (*Winkwell*)
Cumbria, Co. Durham,
Lancashire, Yorkshire,
Northumberland.

Proxy **Peter Richards**
(*Canalside*) Shropshire,
Cheshire

Sue Money-Kyrle
(*Ruardean*) Worcs,
Gloucestershire

Membership Return Address

Charles Horton,
Secretary
Llanwenog Sheep Breeders Support Group
Poulton Fields,
Poulton,
Cirencester,
Gloucestershire GL7 5SS